

RESIDENTIAL CONSTRUCTION

*The home to everyone is to him
his castle and fortress.*

Edward Coke
(English jurist, 1552-1634)

Everyone dreams about own house or flat. That is why housing construction is one of the priorities of the social policy of our country.

Housing stock in Belarus has been increasing every year. At the end of 2013 it comprised 243.5 million sq. metres. Most housing stock is concentrated in urban areas (69%).

In total, 63.8 thousand apartments were built in Belarus in 2013, and 5.2 million sq. metres of the total floor space of housing commissioned.

HOUSING STOCK (end of year)

	2000	2005	2010	2011	2012	2013
Total housing stock, mln m ² of total floor area	212.1	220.7	232.9	237.0	240.3	243.5
of which public	44.0	37.6	33.1	31.5	29.0	25.5
Share of public housing stock in total housing, percent	20.8	17.0	14.2	13.3	12.1	10.5
On average per inhabitant, m ²	21.3	22.9	24.6	25.0	25.4	25.7
Urban housing						
Total housing stock, mln m ² of total floor area	135.0	144.4	157.3	161.5	164.9	168.4
of which public	37.2	30.0	25.4	23.9	21.8	19.0
Share of public housing stock in total housing, percent	27.5	20.8	16.1	14.8	13.2	11.3
On average per inhabitant, m ²	19.3	20.8	22.1	22.5	22.8	23.2
Rural housing						
Total housing stock, mln m ² of total floor area	77.1	76.3	75.6	75.5	75.4	75.1
of which public	6.8	7.6	7.7	7.6	7.2	6.5
Share of public housing stock in total housing, percent	8.9	9.9	10.2	10.1	9.6	8.7
On average per inhabitant, m ²	25.9	28.5	32.0	33.0	33.6	34.3

Housing stock is the total housing in the Republic of Belarus which includes:

- general housing,
- social housing,
- corporate housing,
- halls of residence,
- special corporate housing,
- special housing,
- commercial housing, and other housing.

The share of dilapidated and hazardous dwellings in 2013 was only 0.1%.

DILAPIDATED AND HAZARDOUS HOUSING
(end of year; thousand square metres of total floor area)

	2000	2005	2010	2011	2012	2013
Dilapidated and hazardous housing	660.0	450.0	340.2	313.3	293.0	282.9
of which:						
dilapidated	582.0	389.9	278.8	251.8	228.4	208.7
hazardous	78.0	60.1	61.4	61.5	64.6	74.2
Share of dilapidated and hazardous housing in total housing stock, percent	0.3	0.2	0.1	0.1	0.1	0.1

Housing improvement means the equipment of housing with selected amenities, that is, with piped water supply, sewerage, central heating, gas or electric range, hot water, bathrooms.

The level of housing improvement of Belarusians has been growing every year.

HOUSEHOLDS BY AVAILABLE HOUSING AMENITIES

(according to data of household sample survey;
beginning of year; percent of total households)

	2000	2005	2010	2011	2012	2013
All households	100	100	100	100	100	100
Share of households occupying apartments/ houses equipped with:						
central heating	75.8	77.2	84.4	84.0	84.6	85.7
piped water supply	74.6	78.4	86.8	86.4	86.3	88.6
sewerage	70.4	75.6	84.7	84.4	83.7	86.6
hot water supply	62.2	66.0	76.6	78.3	77.8	80.8
gas	92.2	90.3	88.8	89.9	89.4	89.1
electric range	6.4	8.8	11.0	9.9	10.4	10.9
bath or shower	65.5	69.2	78.2	78.4	77.8	80.3

Total floor area of housing commissioned includes the total floor space of apartments in residential buildings, residence halls and dwellings in other buildings designed for habitation and subject to inclusion in housing stock upon commissioning.

HOUSING BUILT in 2013



In urban areas
3.8 mln m²

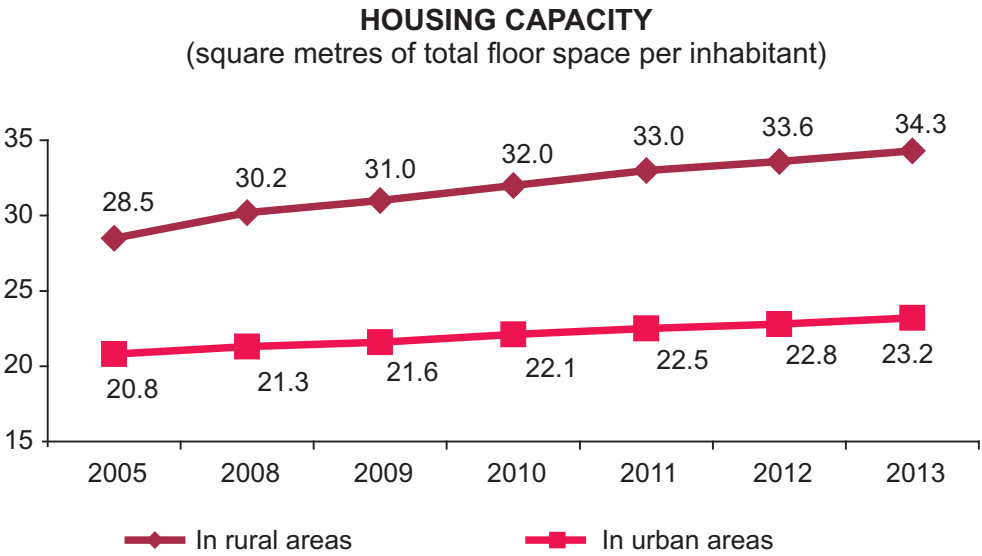


In rural areas
1.4 mln m²

In total, 38.7 thousand people (families) were provided with housing and improved their housing conditions in 2013. Among them are 16.6 thousand young families, 4.6 thousand families with many children, and 2.7 thousand persons entitled to social housing.

The scale of residential construction deployed in the country (553 sq. metres of total floor space per 1 000 population) ensures the steady leadership of Belarus among the member countries of the Commonwealth of Independent States.

The housing capacity has been increasing every year. In 2013 there were 25.7 m² of the total floor space of housing per inhabitant.



Housing capacity is the total floor space of housing per inhabitant. It is measured by dividing the total floor area of housing stock at year-end by the number of the population at the end of the same year.

More than 67% of Belarusians resided in housing units with a total floor space of 20 sq. metres and over in 2013.

The total floor area of a dwelling (apartment or one-dwelling house) comprises the spaces of habitable rooms and auxiliary rooms (kitchens, anterooms, indoor corridors and stairs, bath- or shower rooms, toilet rooms, storerooms, furnace rooms and other rooms which are not habitable) located at the above ground, attic, semi-basement and basement stores, in heated extensions and verandahs, excluding the spaces of unheated (cold) rooms, recessed and protruding balconies, and terraces.

HOUSEHOLDS BY SIZE OF OCCUPIED DWELLING^{*}

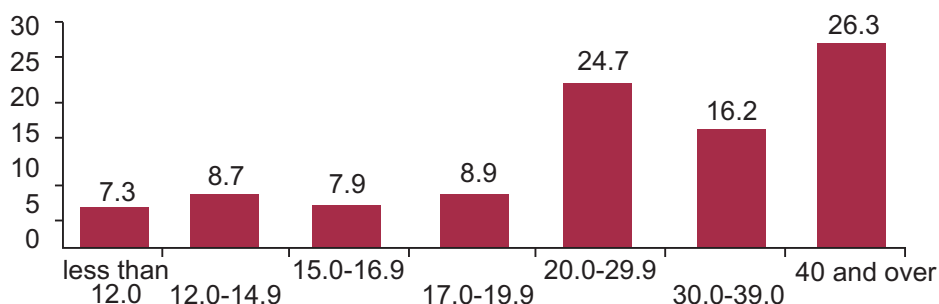
(according to data of household sample survey;
beginning of year; percent of total households)

	2000	2005	2010	2011	2012	2013
All households	100	100	100	100	100	100
of which by total floor space per person, m ²						
less than 12.0	13.3	11.9	9.5	8.1	7.8	7.3
12.0-14.9	11.0	10.2	9.2	9.8	8.9	8.7
15.0-16.9	11.2	9.9	9.0	8.0	8.5	7.9
17.0-19.9	10.4	9.4	9.9	9.7	9.2	8.9
20.0-29.9	26.8	25.6	24.7	25.0	24.4	24.7
30.0-39.0	12.3	13.9	15.1	15.0	15.5	16.2
40 and over	15.0	19.1	22.6	24.4	25.7	26.3

* Excluding households renting dwellings from individuals.

HOUSEHOLDS BY SIZE OF OCCUPIED DWELLING in 2013^{*}

(percent of total households)



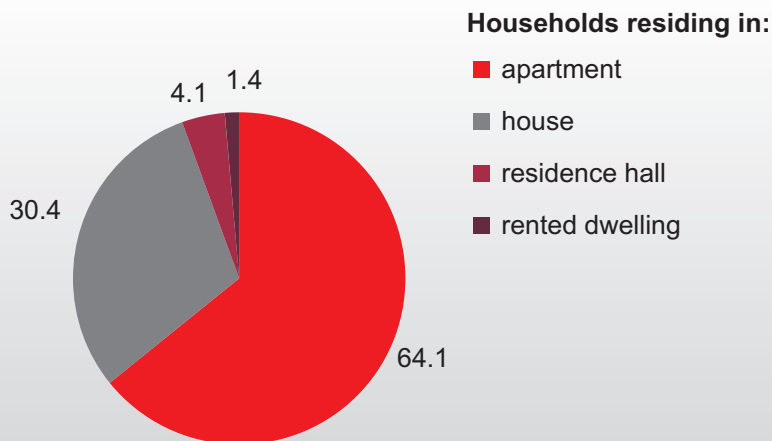
* Excluding households renting dwellings from individuals.

Most urban residents live in apartments located in apartment buildings (78% of the total households residing in cities and urban-type settlements). In rural areas there are mostly one-dwelling houses which, at the beginning of 2014, accommodated 71% of the total households residing in rural localities.

The average size of apartments where Belarusians reside has been increasing every year. In 2013 it was 57.5 m². More than half of flats have two or three habitable rooms.

HOUSEHOLDS BY TYPE OF OCCUPIED DWELLING as of 1 January 2014

(according to data of household sample survey; percent)



OCCUPIED APARTMENTS BY NUMBER OF ROOMS in 2013

(percent of total)

